

TACKLING ENERGY POVERTY PORTUGAL

Conference on Affordable Energy turning civil society views into action
The Road to Efficiency and to Ecological Transition – Successfully Updating NECPs

June 26th 2024



NATIONAL STRATEGY TO TACKLE ENERGY POVERTY 2023-2050 (ELPPE)

- Approved by the **RCM n. 11/2024**, from January 8th
- Established by the **National Energy and Climate Plan 2030 (NECP)**
- Integrated and articulated with the **Long-Term Building Renovation Strategy (ELPRE)** and the **National Strategy to Fight Poverty 2021-2030 (ENCP)**

NATIONAL ENERGY POVERTY OBSERVATORY (ONPE - PT)

- Grounded in the **Council Implementing Decision No. 13351/23**, October 10th
- Established by the **RCM n. 11/2024**, from January 8th
- Functioning and Composition outlined in the **Order n. 1335/2024**, February 2nd
- **Order n. 2404/2024**, March 6th, designates the technical coordinator and teams

ENERGY POVERTY



«A household's **lack of access to essential energy services**, where such services provide basic levels and decent standards of living and health, including adequate heating, hot water, cooling, lighting, and energy to power appliances, in the relevant national context, existing national social policy and other relevant national policies, caused by a combination of factors, including **at least non-affordability, insufficient disposable income, high energy expenditure and poor energy efficiency of homes**»

MAIN INDICATORS

- Share of total population not able to keep home adequately warm
- Share of population living in poverty, not able to keep home adequately warm
- Energy performance of households
- Share of total population with leak, damp, rot in dwelling
- Share of population living in poverty with leak, damp, rot in dwelling
- Population living in houses that are not comfortably cool during the summer
- Share of total households whose energy expenses represent +10% of total income
- Households living in poverty whose energy expenses represent +10% of total income

COMPLEMENTARY INDICATORS

- Population living in poverty risk
- Share of total population with arrears on utility bills
- Share of population living in poverty with arrears on utility bills
- Interruptions in supply due to the fault of the consumer
- Percentage of energy consumption met by local renewable energy production
- Overall energy literacy of private households consumers

STRATEGIC AXIS



Promote the energy and environmental sustainability of housing



Promote universal access to essential energy services

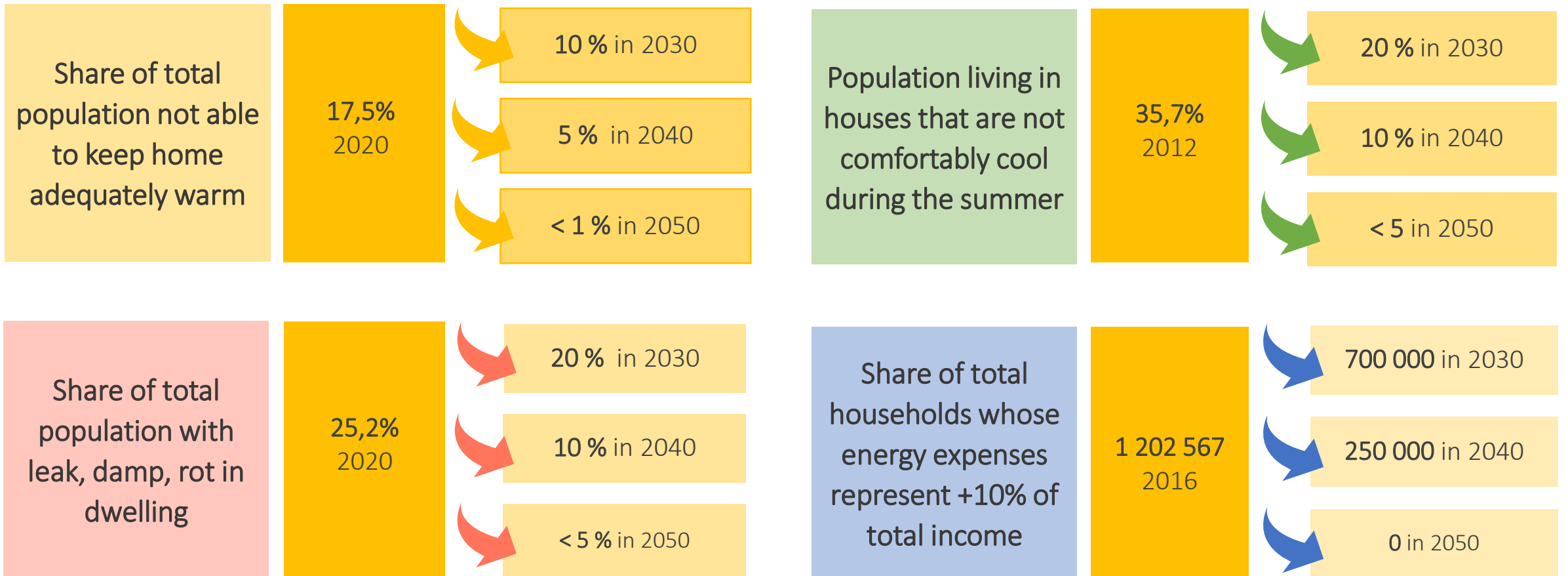


Promote integrated territorial action



Promote knowledge and informed action

ENERGY POVERTY INDICATORS



OBSERVATORY

Management Unit

Led:



Technical and operational support :



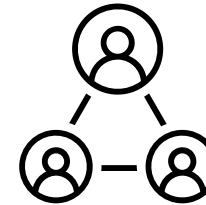
Agência para a Energia

Strategic Commission



Relevant government areas:
energy, housing, solidarity and social security, health, education, territorial cohesion and finance

Advisory Commission



Different areas of expertise from civil society, ensuring territorial and sectoral representativeness.⁽¹⁾

(1) Representatives of public bodies from central, regional and local administration, private non-profit organisations, namely from the social and solidarity economy, civil society organisations, non-governmental organisations, as well as external experts, representatives of services, institutions, universities, funding and support agents, personalities or entities of recognised merit and suitability in the matters involved.

COMPETENCES

- Define new territorially disaggregated strategic indicators
- Develop and propose decennial action plans (PACPE)
- Promote decentralized territorial action
- Propose financial, fiscal, and/or funding instruments
- Promote, value, and disseminate works related to energy poverty

OUR AGENDA

PACPE 2024-2030

- Action Plan to Tackle Energy Poverty (PACPE) 2024-2030

NECP review

- National Energy and Climate Plan's (NECP) review – what is currently published: ELPPE 2023-2050 and ONPE-PT

Thanks for you attention

Catarina Lopes

catarina.lopes@dgeg.gov.pt

